



ROVISOME[®] Hair Growth Serum

- The Hair Booster -

Biotin

- Supports keratin synthesis

Caffeine

- Increases microcirculation and inhibits 5 α -reductase

Vitamine E-Acetate

- Prevention of keratin decomposing

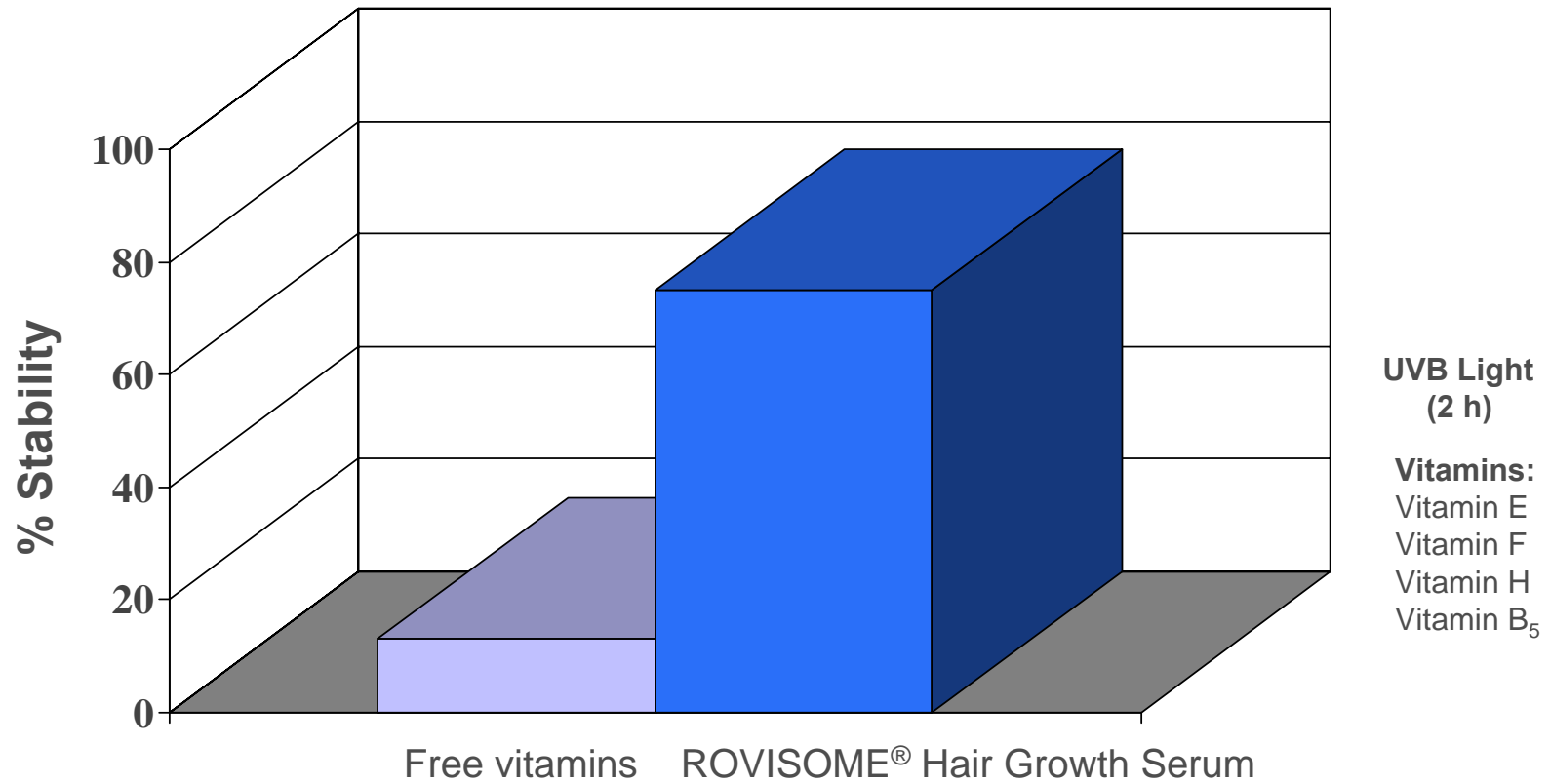
Vitamin D-Panthenol

- Increases hair elasticity and thickness

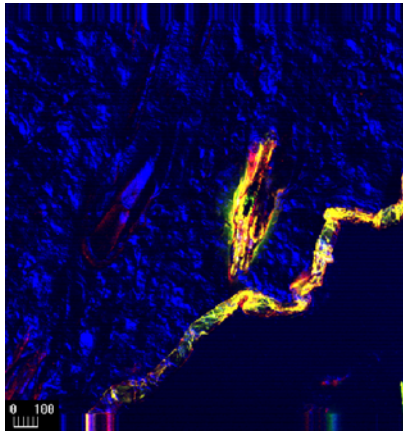
ROVISOME[®] Delivery System: from phosphatidylcholine (soy bean)

- Improvement of bioavailability through penetration
- Increases the hair's tensile strength
- Moisturisation

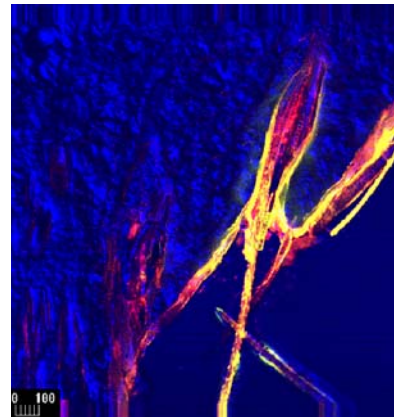
ROVISOME® Hair Growth Serum - Stability



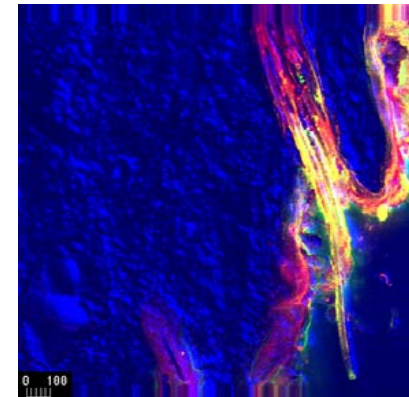
Penetration of tracers CF and Dil into Hairs [overlapping fluorescence]



4 hours

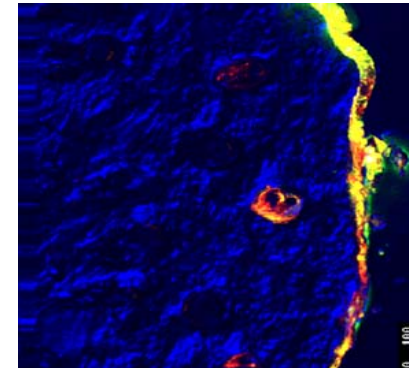
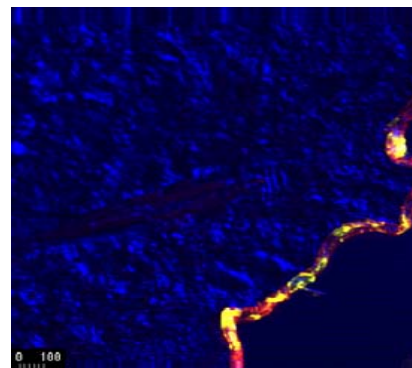
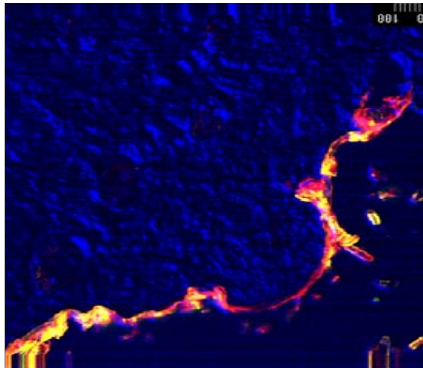


8 hours



16 hours

CF + Dil in
ROVISOMES®



CF + Dil in
water / EtOH

Dil = 1,1- Diocytadecyl-,3,3,3,3-tetramethylindo-carbocyanine perchlorate (red / lipophilic)
CF = Carboxyfluoresceine (yellow / hydrophilic)



ROVISOME® Hair Growth Serum – Efficacy Study

Test products:

ROVISOME® Hair Growth Serum (10%) solution

Test panel:

6 females and 6 males with diffuse hair loss (30 – 60 years)

Test concentration:

approximately 750 µl daily / scalp

Test period:

24 weeks

Test parameters:

Hair density (no. of hairs / cm²) determined by Tricho Scan

Anagen / telogen ratio determined by Tricho Scan

Individual assessment



ROVISOME® Hair Growth Serum Study (individual assessment)

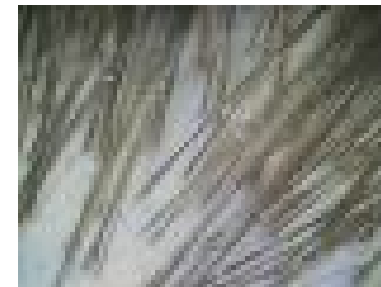
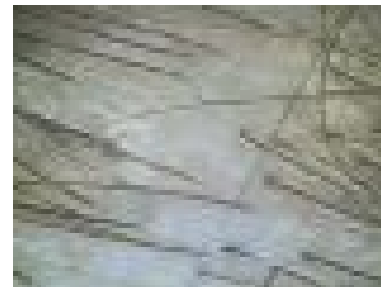
Formulation:	Texture	1.92
	Consumption	2.33
	Spreading	2.08
Skin:	Skin feeling	2.08
	Skin protection	1.92
	Skin care	2.42
Hair:	Hair quality	2.18
	Hair stickiness	2.17
	Hair volume	2.42
	Hair gloss	2.58
	Overall judgement	2.22

score from 1(very good) – 6 (insufficient)

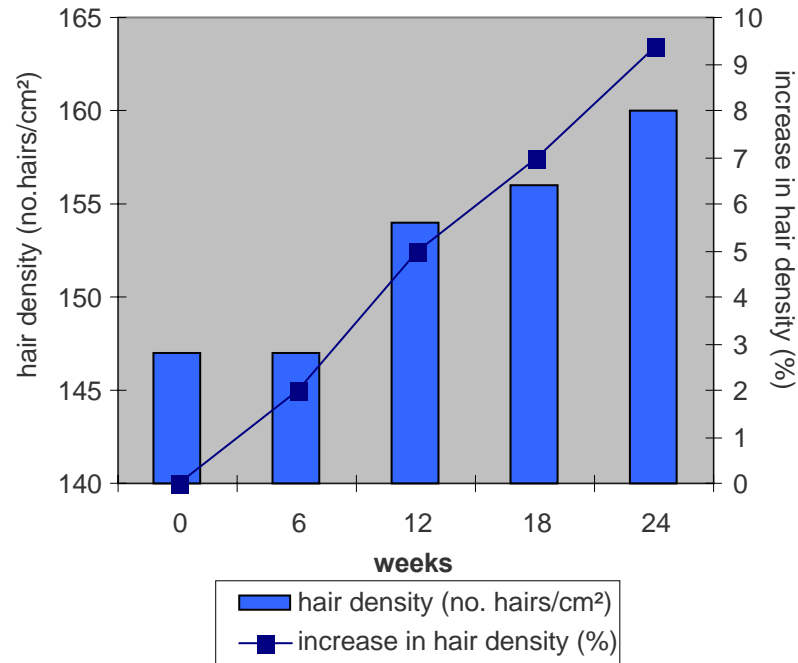
Tricho Scan / Test Method



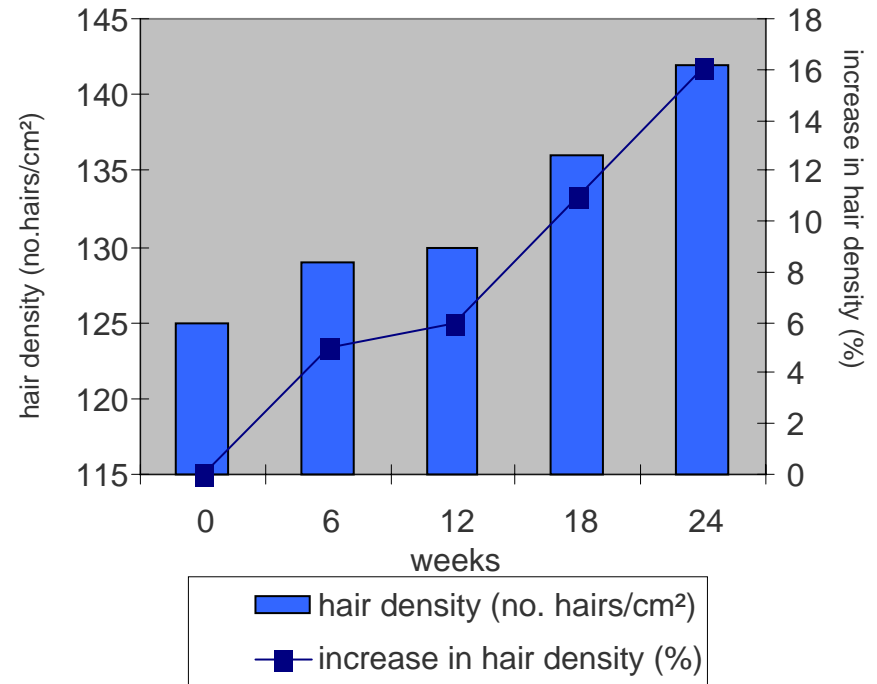
TrichoScan is a method which combines epiluminescence microscopy (ELM) with automatic digital image analysis for the measurement of human hair, in situ. The TrichoScan is able to analyze biological parameters of hair growth like hair density (n/cm²) and the anagen/telogen ratio.



ROVISOME® Hair Growth Serum / Study (Hair Density)

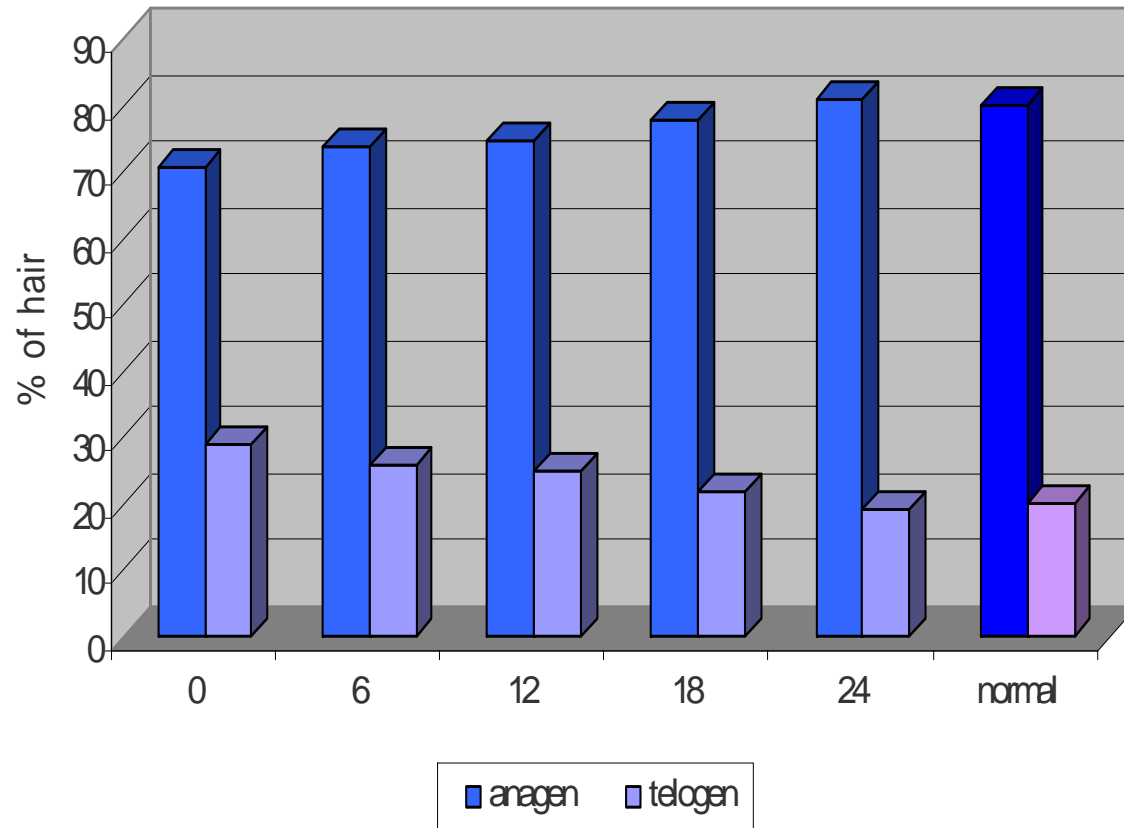


Males = 9.4 % increase



Females = 16 % increase

ROVISOME® Hair Growth Serum (anagen / telogen ratio)



The percentage of hair bulbs in the anagen (growth) phase is 80% under normal conditions.

Lower percentage means hair loss.



ROVISOME® Hair Growth Serum successfully shifts more hairs into the growth phase (anagen phase)!



ROVISOME® Hair Growth Serum / Efficacy Study Photo Documentation

Males



before



after 24 weeks

ROVISOME® Hair Growth Serum / Efficacy Study Photo Documentation

Females



before



after 24 weeks

Benefits of ROVISOME® Hair Growth Serum:

- **Significantly increased hair density**
(male: 9,4 % / female: 16,1 % after 24 weeks)
- **Normalisation of anagen / telogen ratio after 24 weeks**
- **Visible Effects**
- **Excellent consumer tolerance**
- **Ideal for leave-on products**

